

±2,744 SF INDUSTRIAL WAREHOUSE FOR LEASE

LAGO VISTA (Central Broward)

3023 NW 60th Street

FORT LAUDERDALE, FLORIDA 33309



PROPERTY HIGHLIGHTS:

- **±2,744 SF office/warehouse with ±1,000 SF ofc.**
- **100% air conditioned space**
- **±600 SF mezzanine over office area for light weight storage**
- **21 ft. clear height ceilings in warehouse**
- **3 phase, 200 amp electric**
- **1 ground level bay door**
- **Zoned: AIP (airport industrial park), City of Fort Lauderdale**
- **Excellent Central Broward location with easy access to Florida's Turnpike and I-95**

CONTACT:

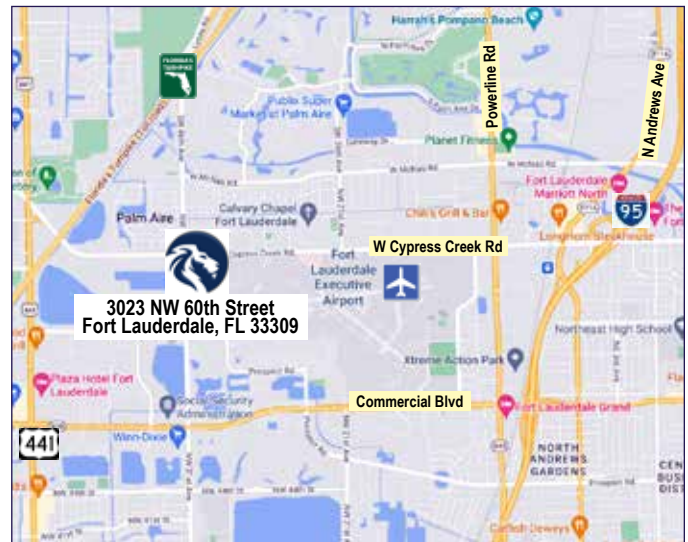
Todd H. Weaver, Principal

954 205 4289

todd@weavermorrison.com

Lease Rate:

\$23.50 PSF
Modified Gross



WEAVER • MORRISON



COMMERCIAL REAL ESTATE

WEAVER • MORRISON COMMERCIAL REAL ESTATE

2972 NW 60th Street • Fort Lauderdale, FL 33309

954 686 9300 www.weavermorrison.com

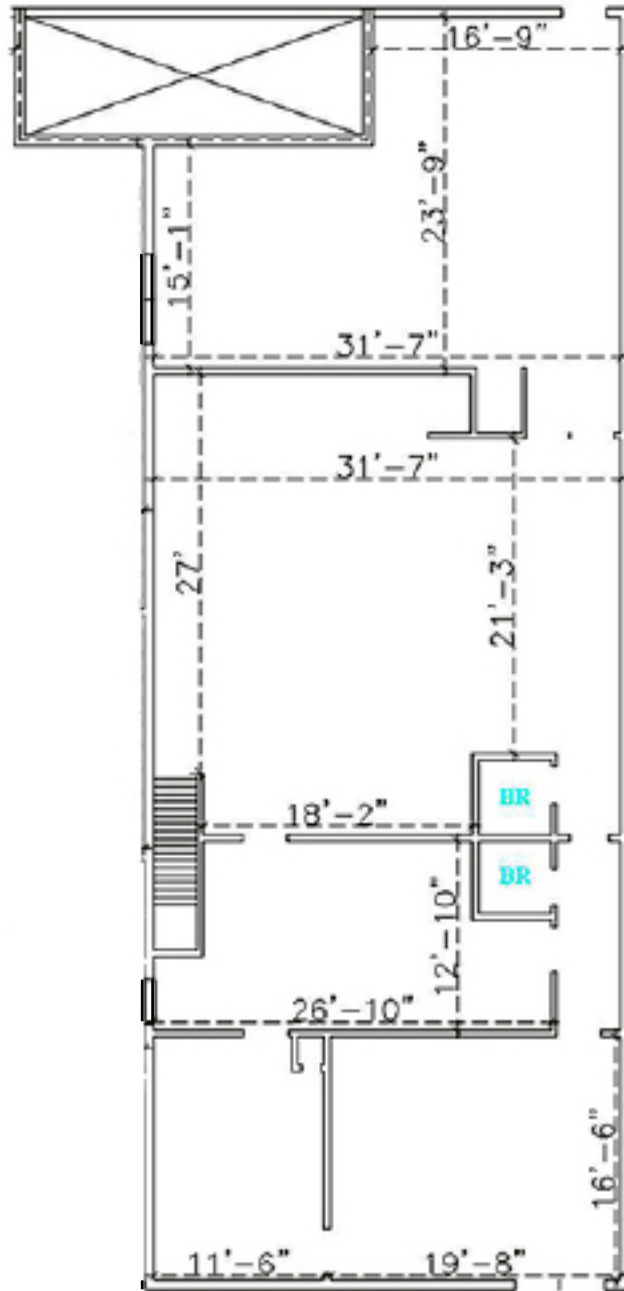
NO WARRANTY OR REPRESENTATION, EXPRESS OR IMPLIED, IS MADE AS TO THE ACCURACY OF THE INFORMATION CONTAINED HEREIN, AND THE SAME IS SUBMITTED SUBJECT TO ERRORS, OMISSIONS, CHANGE OF PRICE, RENTAL OR OTHER CONDITIONS, PRIOR SALE, LEASE OR FINANCING, OR WITHDRAWAL WITHOUT NOTICE, AND OF ANY SPECIAL LISTING CONDITIONS IMPOSED BY OUR PRINCIPALS NO WARRANTIES OR REPRESENTATIONS ARE MADE AS TO THE CONDITION OF THE PROPERTY OR ANY HAZARDS CONTAINED THEREIN ARE ANY TO BE IMPLIED.

±2,744 SF INDUSTRIAL WAREHOUSE FOR LEASE

LAGO VISTA (Central Broward)

3023 NW 60th Street

FORT LAUDERDALE, FLORIDA 33309



WEAVER • MORRISON



COMMERCIAL REAL ESTATE

Todd H. Weaver, Principal

954 205 4289

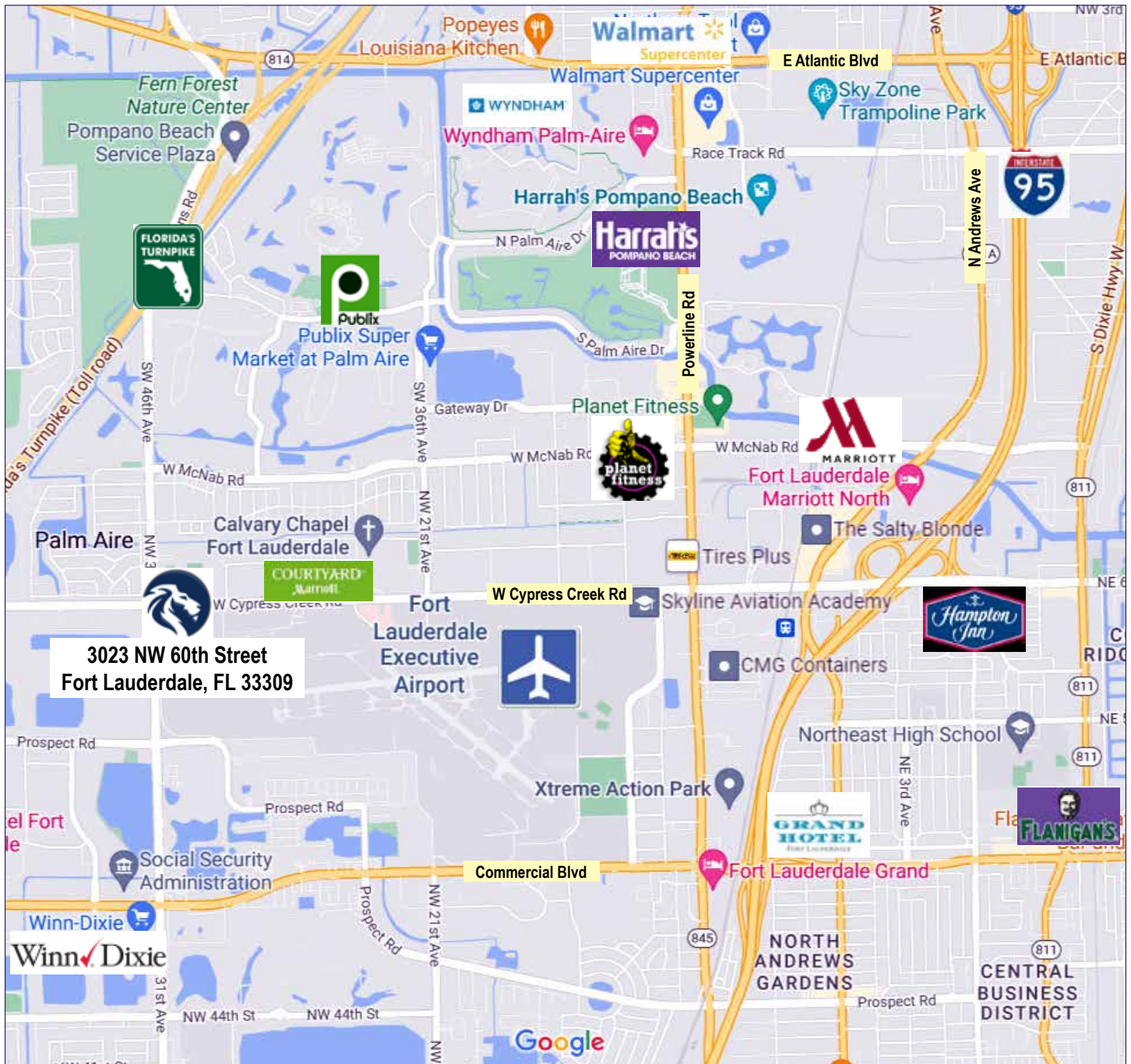
todd@weavermorrison.com

±2,744 SF INDUSTRIAL WAREHOUSE FOR LEASE

LAGO VISTA (Central Broward)

3023 NW 60th Street

FORT LAUDERDALE, FLORIDA 33309



WEAVER • MORRISON



COMMERCIAL REAL ESTATE

Todd H. Weaver, Principal

954 205 4289

todd@weavermorrison.com