

Ideal Location - ±40,840 SF Manufacturing Building on 1.36 Acres

NEAR PORT EVERGLADES, I-595, FTL AIRPORT

3300 SE 6th Avenue

FORT LAUDERDALE, FLORIDA 33316



PROPERTY HIGHLIGHTS:

- **Manufacturing building located in prime location near Fort Lauderdale-Hollywood International Airport, Port Everglades, I-95, I-595 and US-1, Federal Highway**
- **±40,840 SF building on 1.36 acres of land**
- **±4,400 SF office and ±36,440 SF warehouse**
- **12 ground level bay doors**
- **3 phase, 2,000 amps power**
- **Zoned: B-3, City of Fort Lauderdale**

CONTACT:

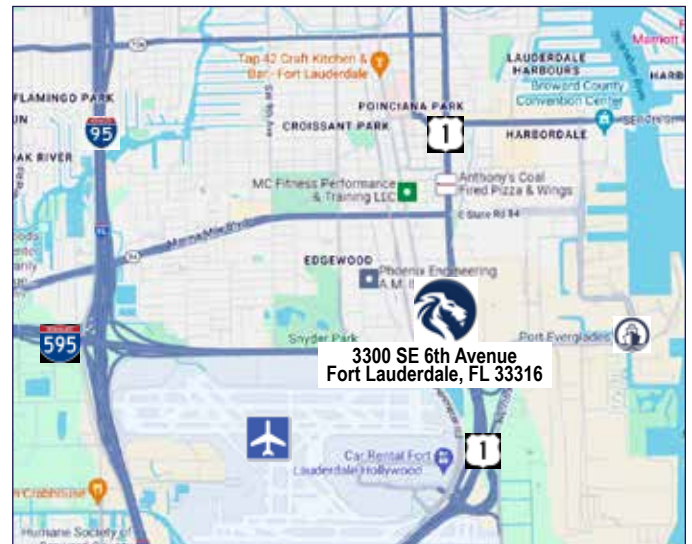
Todd H. Weaver, Principal

954 205 4289

todd@weavermorrison.com

Sale Price:

\$8,900,000



WEAVER · MORRISON



COMMERCIAL REAL ESTATE

WEAVER·MORRISON COMMERCIAL REAL ESTATE

2972 NW 60th Street • Fort Lauderdale, FL 33309

954 686 9300 www.weavermorrison.com

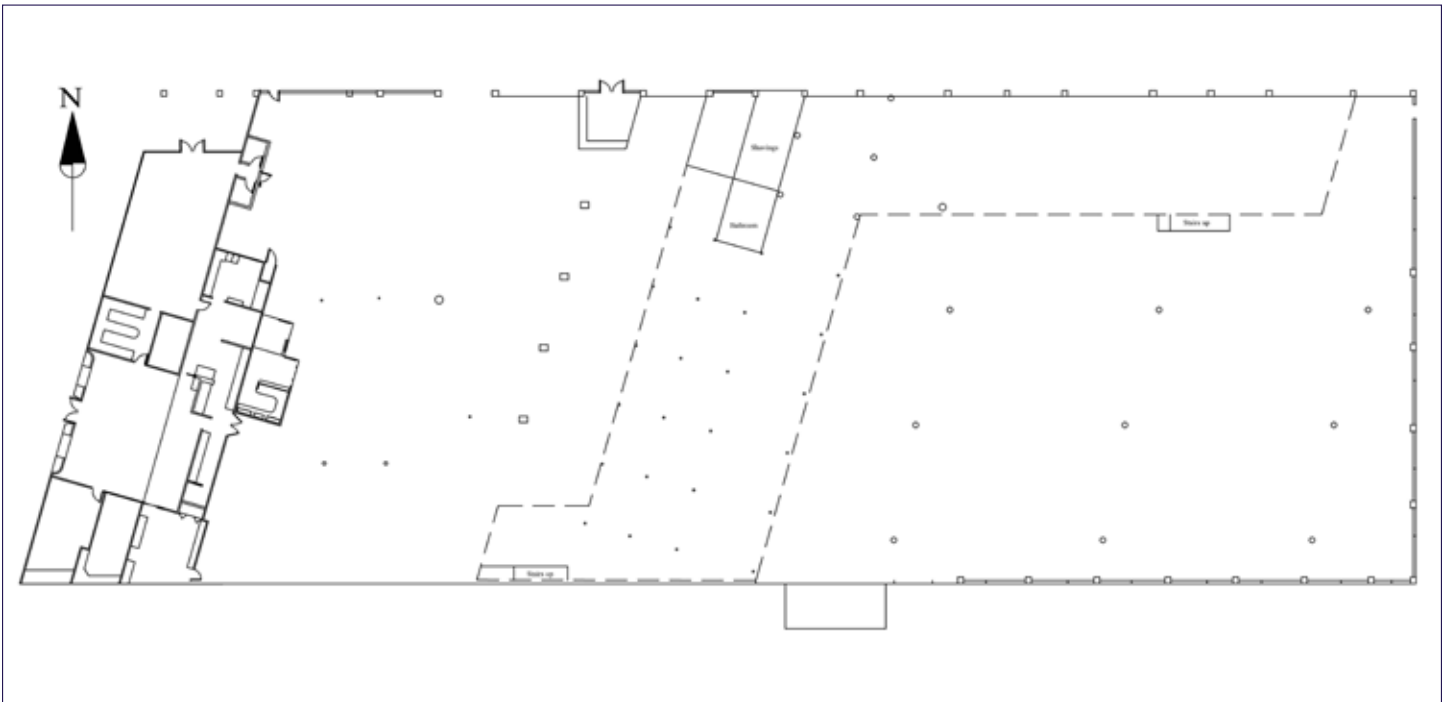
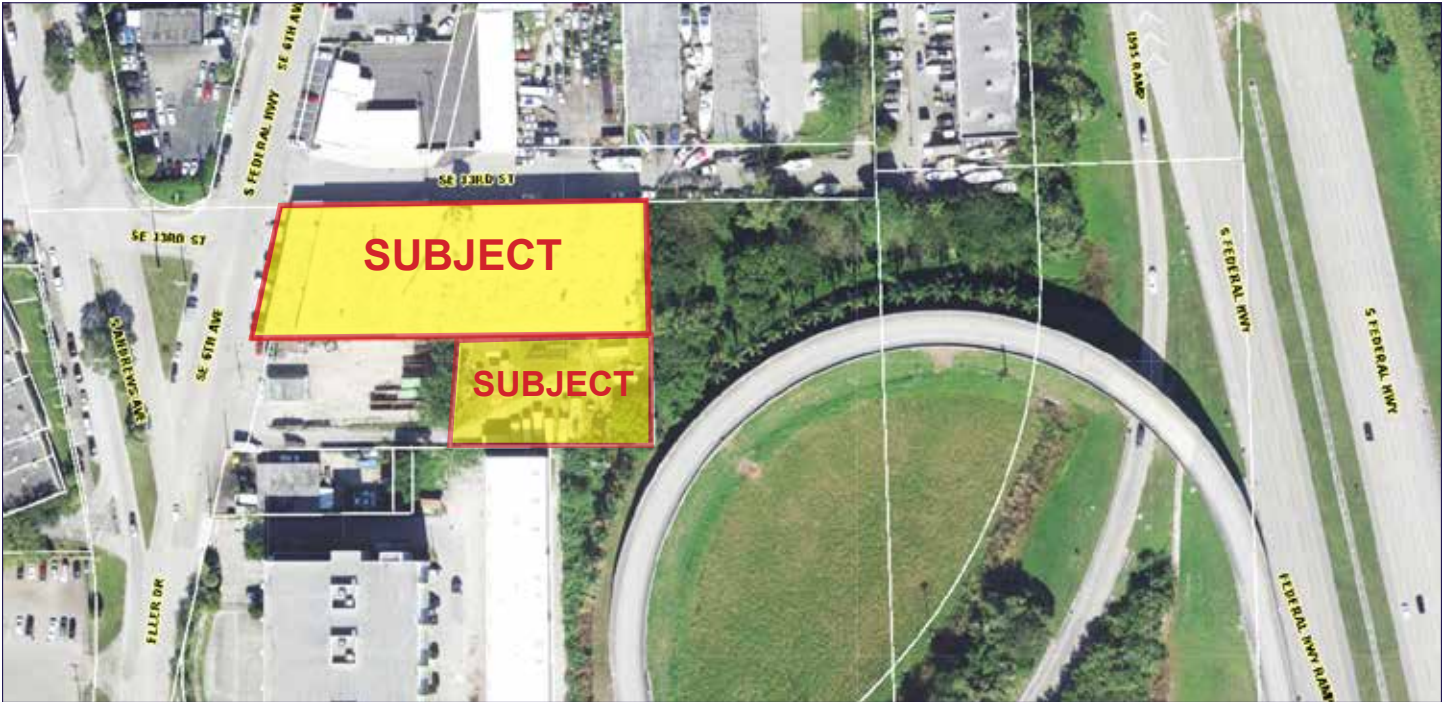
NO WARRANTY OR REPRESENTATION, EXPRESS OR IMPLIED, IS MADE AS TO THE ACCURACY OF THE INFORMATION CONTAINED HEREIN, AND THE SAME IS SUBMITTED SUBJECT TO ERRORS, OMISSIONS, CHANGE OF PRICE, RENTAL OR OTHER CONDITIONS, PRIOR SALE, LEASE OR FINANCING, OR WITHDRAWAL WITHOUT NOTICE, AND OF ANY SPECIAL LISTING CONDITIONS IMPOSED BY OUR PRINCIPALS NO WARRANTIES OR REPRESENTATIONS ARE MADE AS TO THE CONDITION OF THE PROPERTY OR ANY HAZARDS CONTAINED THEREIN ARE ANY TO BE IMPLIED.

Ideal Location - ±40,840 SF Manufacturing Building on 1.36 Acres

NEAR PORT EVERGLADES, I-595, FTL AIRPORT

3300 SE 6th Avenue

FORT LAUDERDALE, FLORIDA 33316



WEAVER • MORRISON



COMMERCIAL REAL ESTATE

Todd H. Weaver, Principal

954 205 4289

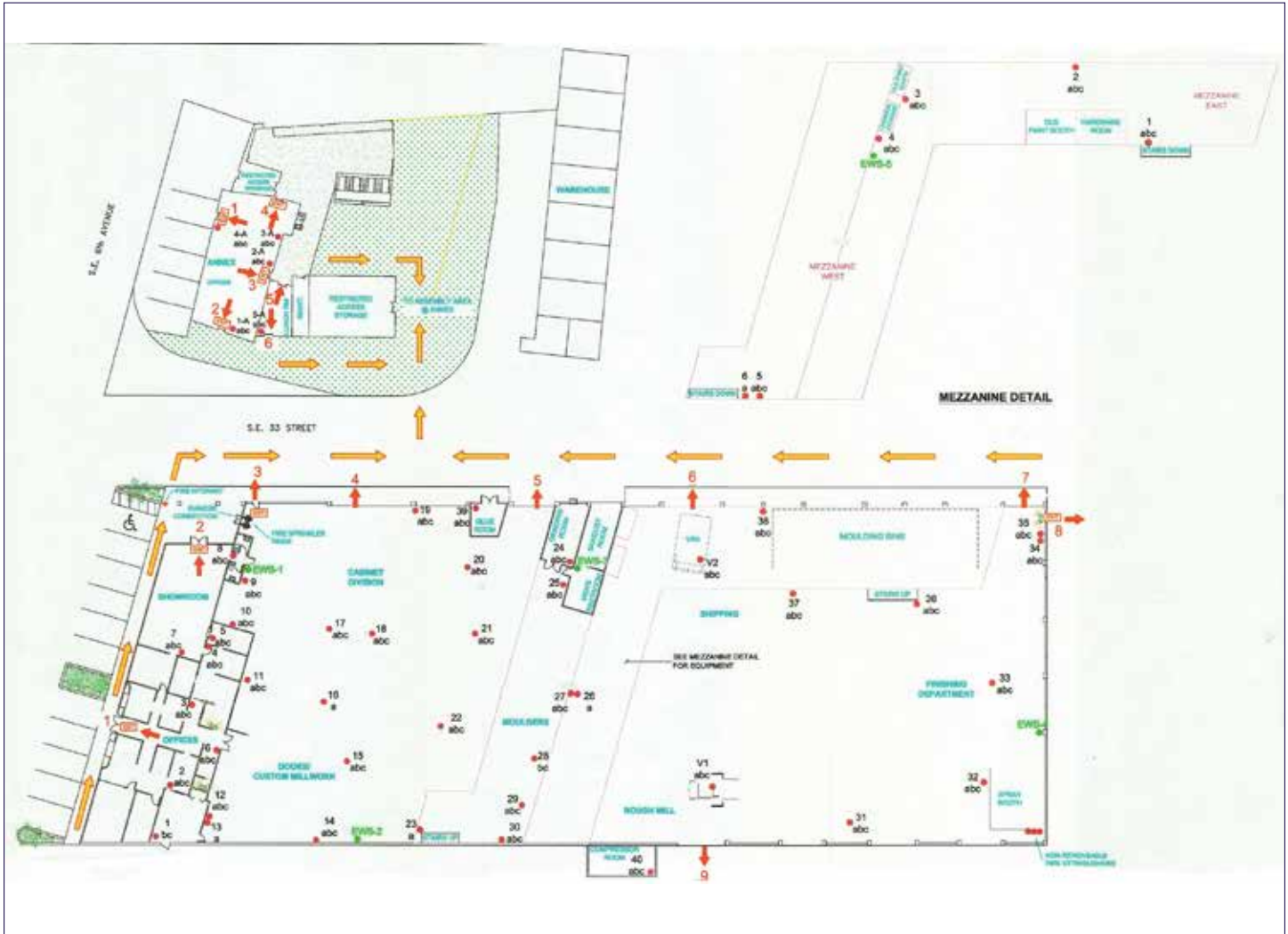
todd@weavermorrison.com

Ideal Location - ±40,840 SF Manufacturing Building on 1.36 Acres

NEAR PORT EVERGLADES, I-595, FTL AIRPORT

3300 SE 6th Avenue

FORT LAUDERDALE, FLORIDA 33316



WEAVER • MORRISON



COMMERCIAL REAL ESTATE

Todd H. Weaver, Principal

954 205 4289

todd@weavermorrison.com

Ideal Location - ±40,840 SF Manufacturing Building on 1.36 Acres

NEAR PORT EVERGLADES, I-595, FTL AIRPORT

3300 SE 6th Avenue

FORT LAUDERDALE, FLORIDA 33316



WEAVER • MORRISON



COMMERCIAL REAL ESTATE

Todd H. Weaver, Principal

954 205 4289

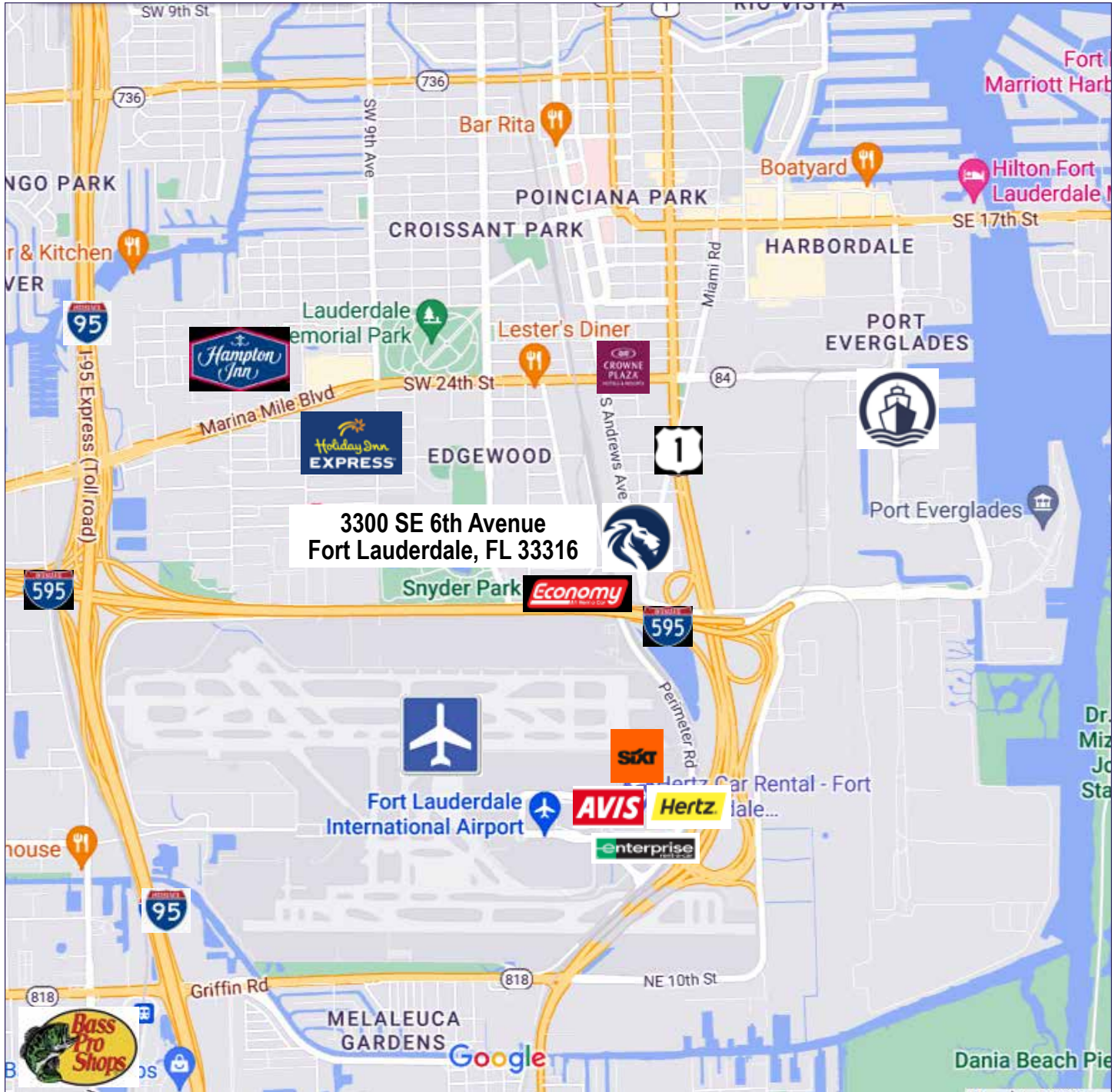
todd@weavermorrison.com

Ideal Location - ±40,840 SF Manufacturing Building on 1.36 Acres

NEAR PORT EVERGLADES, I-595, FTL AIRPORT

3300 SE 6th Avenue

FORT LAUDERDALE, FLORIDA 33316



WEAVER • MORRISON



COMMERCIAL REAL ESTATE

Todd H. Weaver, Principal

954 205 4289

todd@weavermorrison.com