

**SPACE FOR LEASE FROM ±207 SF - ±2,920 SF**

**BUILD-TO-SUIT MEDICAL/OFFICE SPACE**  
1299 E. Commercial Blvd.  
**FORT LAUDERDALE, FL 33334**



**PROPERTY HIGHLIGHTS:**

- **First Generation Professional Medical/ Office Space suites available:**  
±207 SF, ±537 SF, ±612 SF, ±743 SF,  
±1,428 SF, ±2,103 SF, ±2,713 SF, ±2,920 SF
- **Parking: 4.0/1000**
- **Zoned: B-1, City of Oakland Park**
- **Convenient location near major hospitals, Cypress Creek Business District, hotels and restaurants**
- **Average Daily Traffic: ±55,000 vehicles**

**Lease Rate:**  
**\$28.00 PSF NNN**  
(net of janitorial)

**CONTACT:**

**Todd H. Weaver, Principal**  
**954 205 4289**  
todd@weavermorrison.com



**WEAVER · MORRISON**



**COMMERCIAL REAL ESTATE**

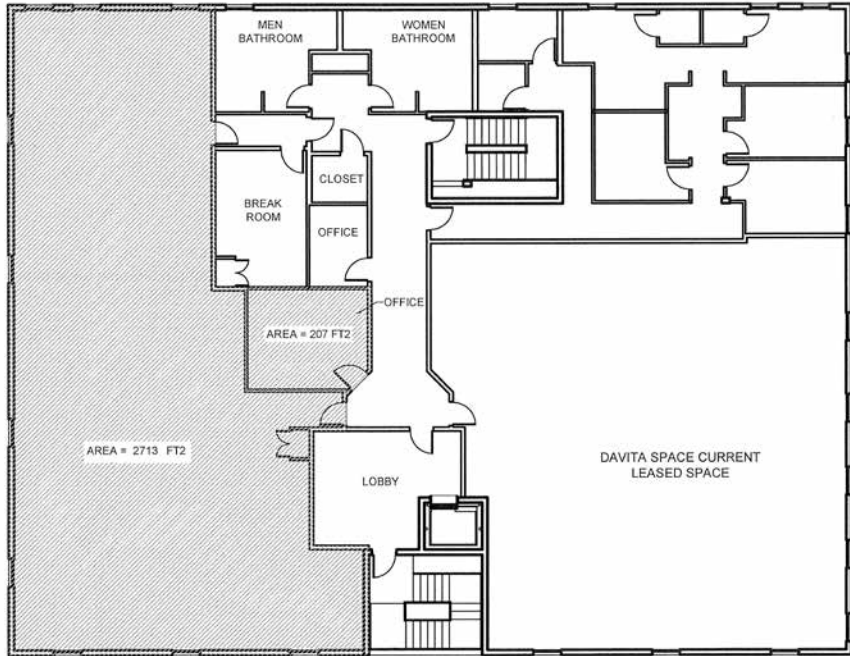
**WEAVER·MORRISON COMMERCIAL REAL ESTATE**  
2972 NW 60th Street • Fort Lauderdale, FL 33309  
954 686 9300    www.weavermorrison.com

NO WARRANTY OR REPRESENTATION, EXPRESS OR IMPLIED, IS MADE AS TO THE ACCURACY OF THE INFORMATION CONTAINED HEREIN, AND THE SAME IS SUBMITTED SUBJECT TO ERRORS, OMISSIONS, CHANGE OF PRICE, RENTAL OR OTHER CONDITIONS, PRIOR SALE, LEASE OR FINANCING, OR WITHDRAWAL WITHOUT NOTICE, AND OF ANY SPECIAL LISTING CONDITIONS IMPOSED BY OUR PRINCIPALS NO WARRANTIES OR REPRESENTATIONS ARE MADE AS TO THE CONDITION OF THE PROPERTY OR ANY HAZARDS CONTAINED THEREIN ARE ANY TO BE IMPLIED.

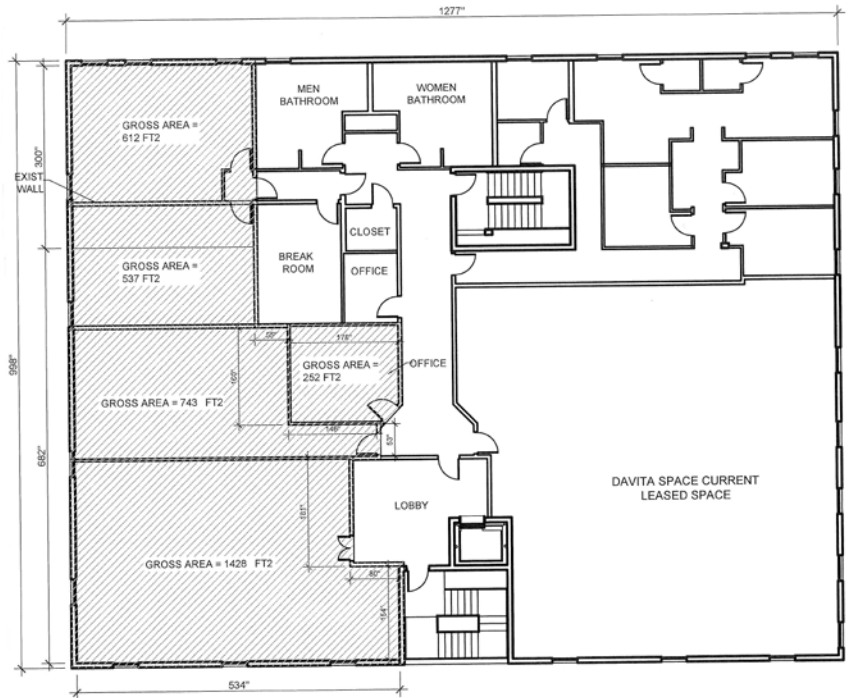
**SPACE FOR LEASE FROM ±207 SF - ±2,920 SF**

**BUILD-TO-SUIT MEDICAL/OFFICE SPACE**  
1299 E. Commercial Blvd.  
**FORT LAUDERDALE, FL 33334**

**Option 1**



**Option 2**



**WEAVER • MORRISON**



COMMERCIAL REAL ESTATE

**Todd H. Weaver, Principal**  
954 205 4289  
todd@weavermorrison.com

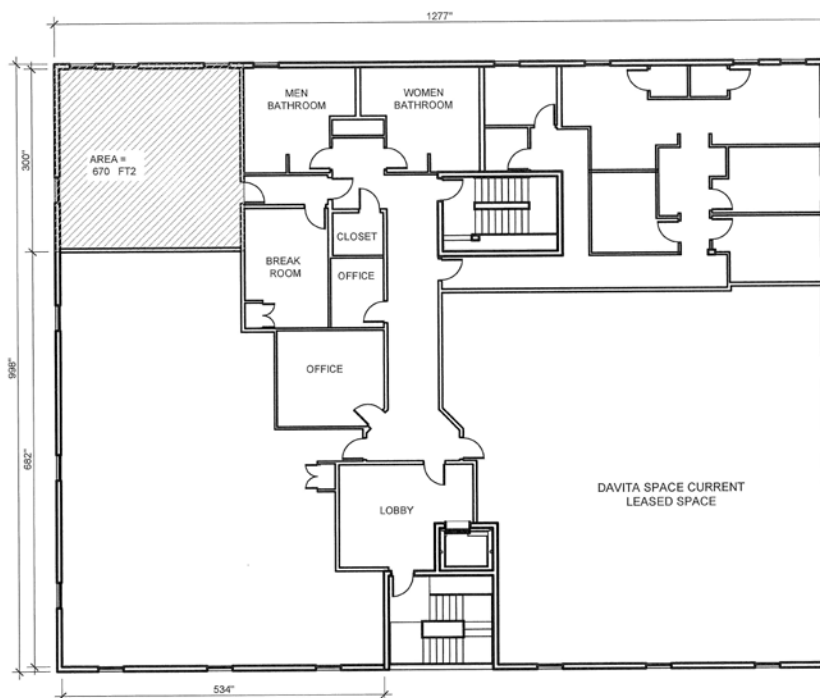
**SPACE FOR LEASE FROM ±207 SF - ±2,920 SF**

# **BUILD-TO-SUIT MEDICAL/OFFICE SPACE**

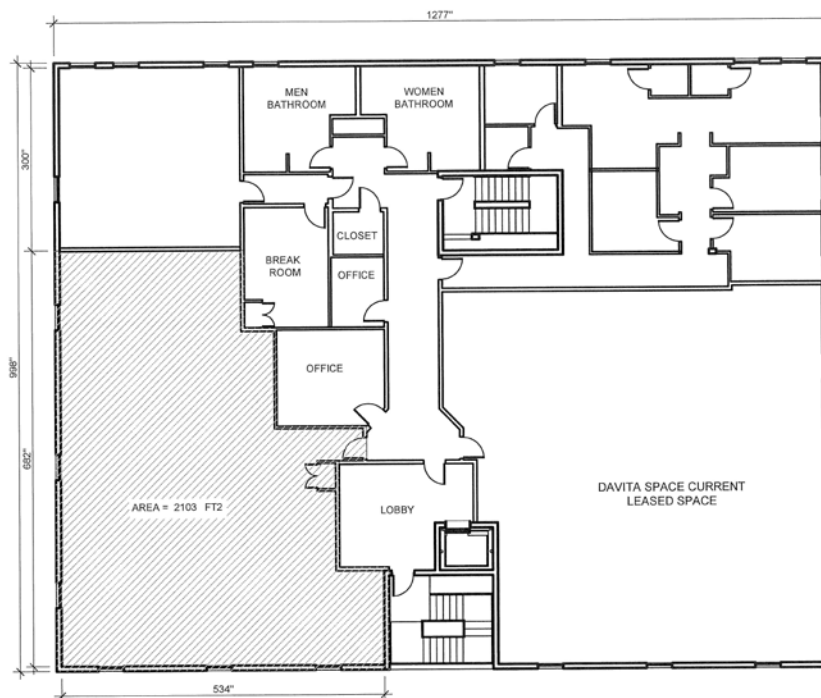
1299 E. Commercial Blvd.

**FORT LAUDERDALE, FL 33334**

**Option 3**



**Option 4**



**WEAVER • MORRISON**



COMMERCIAL REAL ESTATE

**Todd H. Weaver, Principal**

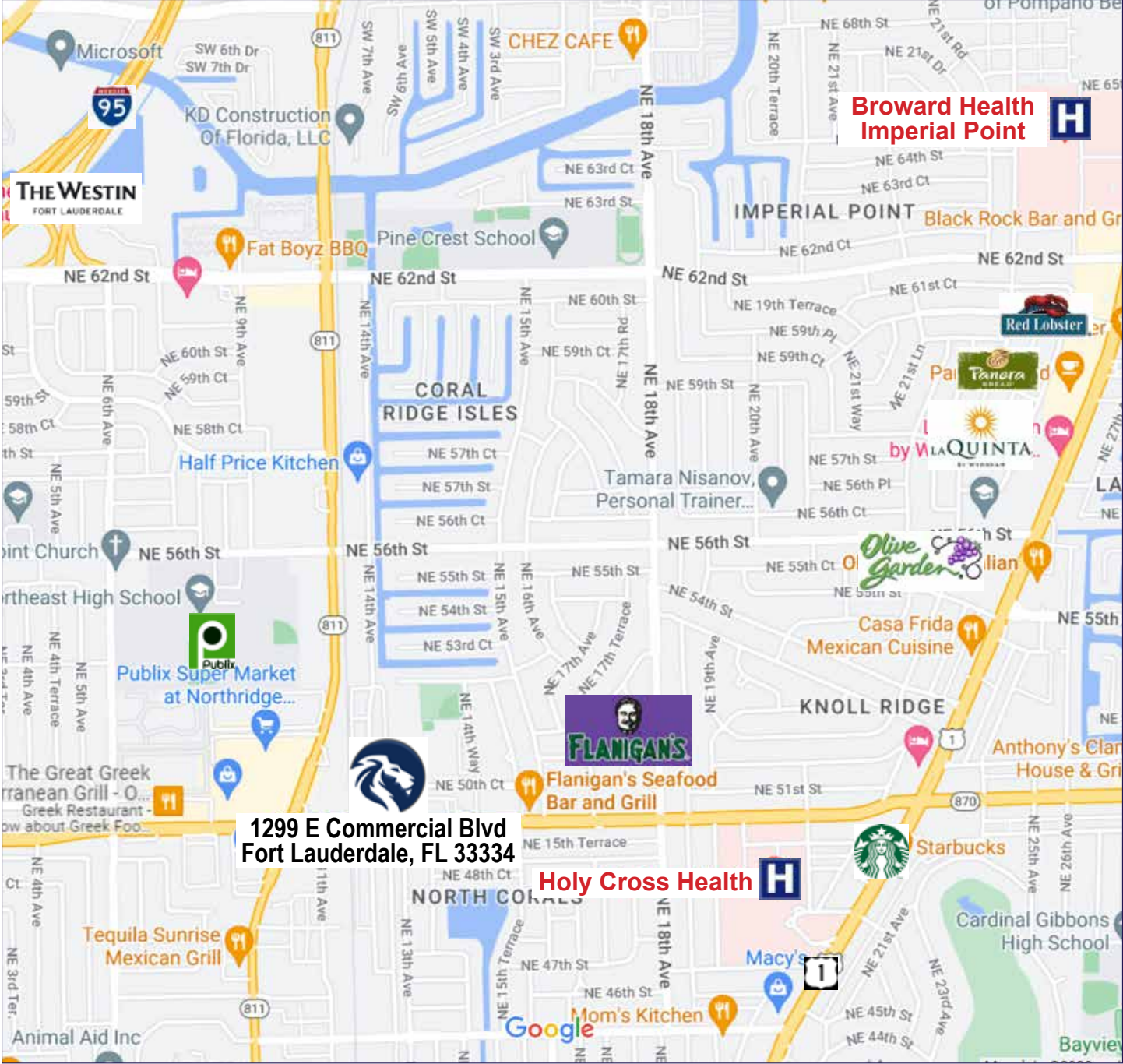
954 205 4289

[todd@weavermorrison.com](mailto:todd@weavermorrison.com)



**SPACE FOR LEASE FROM ±207 SF - ±2,920 SF**

**BUILD-TO-SUIT MEDICAL/OFFICE SPACE**  
1299 E. Commercial Blvd.  
**FORT LAUDERDALE, FL 33334**



**WEAVER · MORRISON**



**COMMERCIAL REAL ESTATE**

**Todd H. Weaver, Principal**  
954 205 4289  
todd@weavermorrison.com