

CORAL SPRINGS CORPORATE PARK

11950 NW 39th Street, Suite C & D

CORAL SPRINGS, FLORIDA 33065



PROPERTY HIGHLIGHTS:

- ±6,216 SF Manufacturing space
- ±800 SF Office included
- Reception area with 2 offices and restroom
- Shop office & 2 Restrooms in warehouse area
- 600 amp 3-phase power
- 100% HVAC
- Nice and clean - move in condition
- Zoned: IRD, City of Coral Springs
- Minutes from Sawgrass Expy. (FL SR 869)

CONTACT:

Franklin B. Morrison, Principal

954 801 0830

frank@weavermorrison.com

Lease Rate:

\$16.00 psf NNN
\$5.75 expenses (includes water)



WEAVER · MORRISON



COMMERCIAL REAL ESTATE

WEAVER·MORRISON COMMERCIAL REAL ESTATE

2972 NW 60th Street • Fort Lauderdale, FL 33309

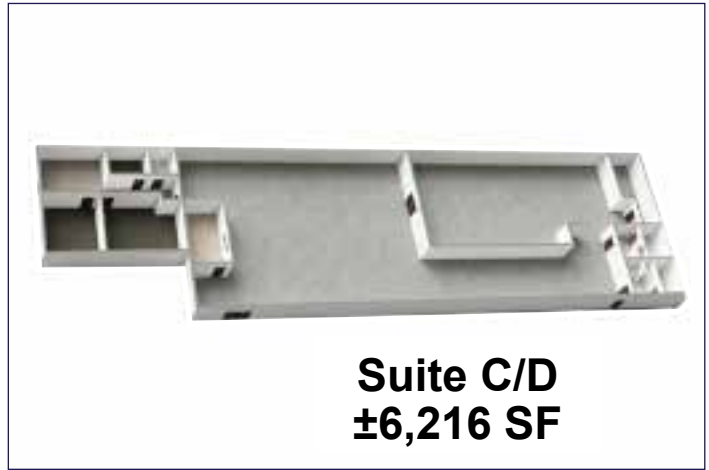
954 686 9300 www.weavermorrison.com

MANUFACTURING/OFFICE SPACE FOR LEASE

CORAL SPRINGS CORPORATE PARK

11950 NW 39th Street, Suite C & D

CORAL SPRINGS, FLORIDA 33065



WEAVER • MORRISON



COMMERCIAL REAL ESTATE

Franklin B. Morrison, Principal

954 801 0830

frank@weavermorrison.com