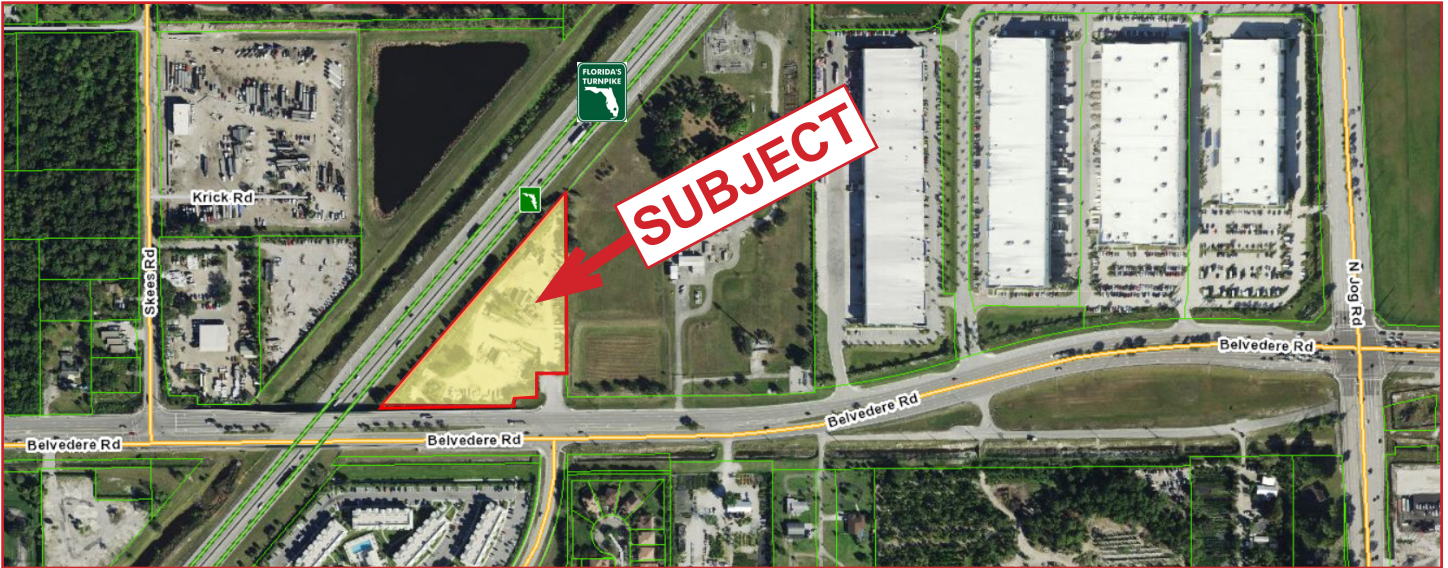


±1/2 to 1 1/2 ACRES OUTSIDE STORAGE LAND FOR SUBLEASE

6811 BELVEDERE ROAD

6811 Belvedere Road

WEST PALM BEACH, FLORIDA 33413



PROPERTY HIGHLIGHTS:

- **±1/2 to 1 1/2 acres outside storage land**
- **Paved entrance with full perimeter fencing**
- **Drainage is around the site perimeter on the southwest portion of the property**
- **Site is located on the NE quadrant of Florida's Turnpike and Belvedere Road**
- **The site is 5 miles west of Palm Beach International Airport**
- **Rare opportunity to lease outside storage in West Palm Beach**
- **Zoned: IG - General Industrial, Palm Beach County**
- **Sublease Rate: \$4.50 psf Gross**



CONTACT:

Franklin B. Morrison, Principal
954 801 0830
frank@weavermorrison.com

WEAVER • MORRISON



COMMERCIAL REAL ESTATE

WEAVER • MORRISON COMMERCIAL REAL ESTATE

2972 NW 60th Street • Fort Lauderdale, FL 33309

954 686 9300 www.weavermorrison.com

NO WARRANTY OR REPRESENTATION, EXPRESS OR IMPLIED, IS MADE AS TO THE ACCURACY OF THE INFORMATION CONTAINED HEREIN, AND THE SAME IS SUBMITTED SUBJECT TO ERRORS, OMISSIONS, CHANGE OF PRICE, RENTAL OR OTHER CONDITIONS, PRIOR SALE, LEASE OR FINANCING, OR WITHDRAWAL WITHOUT NOTICE, AND OF ANY SPECIAL LISTING CONDITIONS IMPOSED BY OUR PRINCIPALS NO WARRANTIES OR REPRESENTATIONS ARE MADE AS TO THE CONDITION OF THE PROPERTY OR ANY HAZARDS CONTAINED THEREIN ARE ANY TO BE IMPLIED.