

**Ideal Location - ±40,840 SF Manufacturing Building on 1.36 Acres**

**NEAR PORT EVERGLADES, I-595, FTL AIRPORT**

**3300 SE 6th Avenue**

**FORT LAUDERDALE, FLORIDA 33316**



PROPERTY HIGHLIGHTS:

- **Manufacturing building located in prime location near Fort Lauderdale-Hollywood International Airport, Port Everglades, I-95, I-595 and US-1, Federal Highway**
- **±40,840 SF building on 1.36 acres of land**
- **±4,400 SF office and ±36,440 SF warehouse**
- **12 ground level bay doors**
- **3 phase, 2,000 amps power**
- **Zoned: B-3, City of Fort Lauderdale**

CONTACT:

**Todd H. Weaver, Principal**

**954 205 4289**

**todd@weavermorrison.com**

**Sale Price:**

**\$9,800,000**



**WEAVER · MORRISON**



**COMMERCIAL REAL ESTATE**

**WEAVER·MORRISON COMMERCIAL REAL ESTATE**

2972 NW 60th Street • Fort Lauderdale, FL 33309

954 686 9300 [www.weavermorrison.com](http://www.weavermorrison.com)

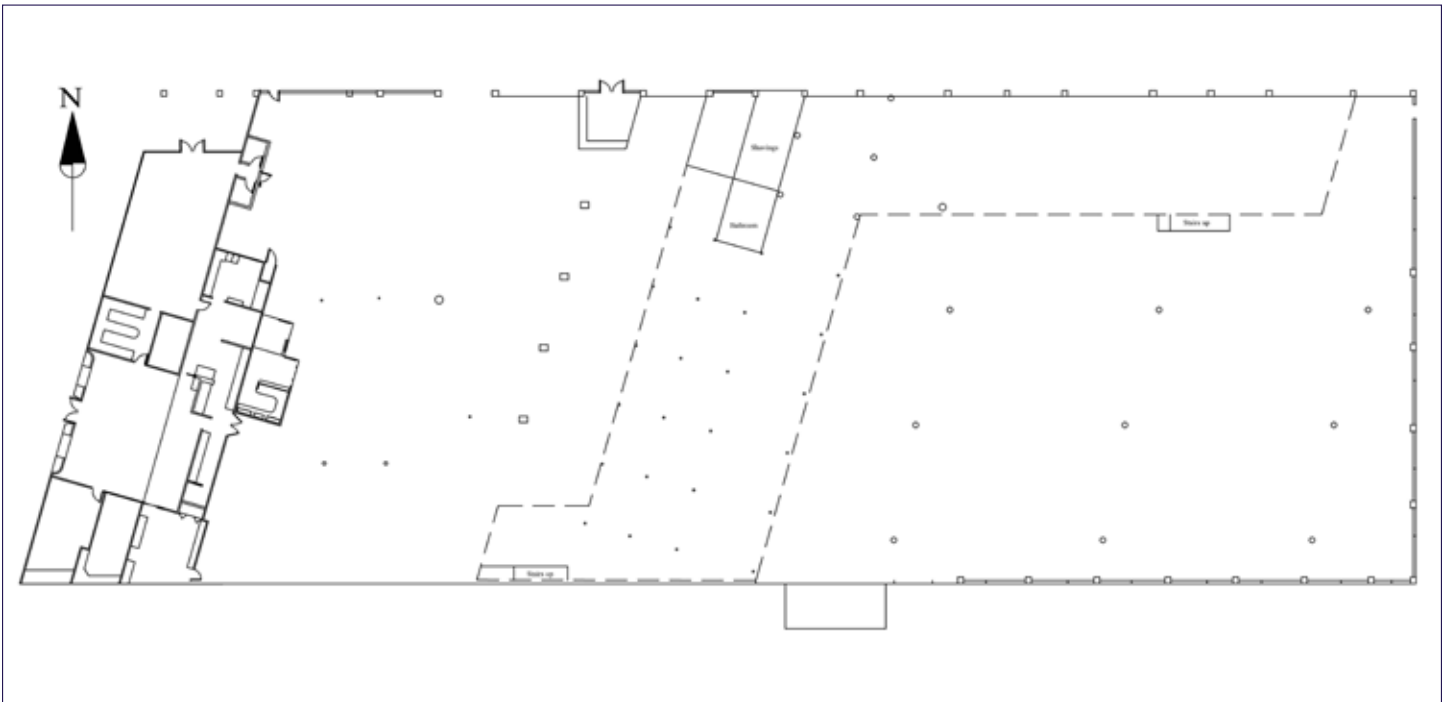
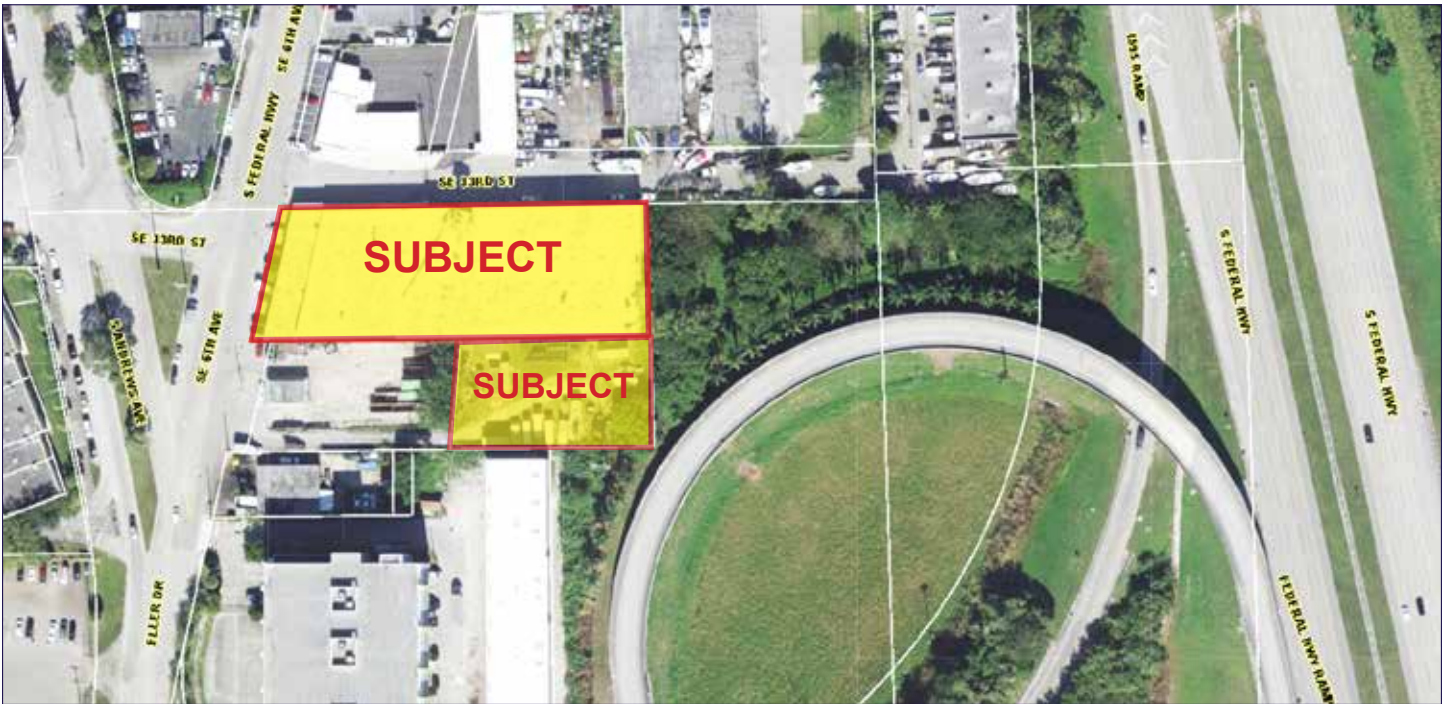
NO WARRANTY OR REPRESENTATION, EXPRESS OR IMPLIED, IS MADE AS TO THE ACCURACY OF THE INFORMATION CONTAINED HEREIN, AND THE SAME IS SUBMITTED SUBJECT TO ERRORS, OMISSIONS, CHANGE OF PRICE, RENTAL OR OTHER CONDITIONS, PRIOR SALE, LEASE OR FINANCING, OR WITHDRAWAL WITHOUT NOTICE, AND OF ANY SPECIAL LISTING CONDITIONS IMPOSED BY OUR PRINCIPALS NO WARRANTIES OR REPRESENTATIONS ARE MADE AS TO THE CONDITION OF THE PROPERTY OR ANY HAZARDS CONTAINED THEREIN ARE ANY TO BE IMPLIED.

**Ideal Location - ±40,840 SF Manufacturing Building on 1.36 Acres**

**NEAR PORT EVERGLADES, I-595, FTL AIRPORT**

3300 SE 6th Avenue

**FORT LAUDERDALE, FLORIDA 33316**



**WEAVER • MORRISON**



COMMERCIAL REAL ESTATE

**Todd H. Weaver, Principal**

954 205 4289

[todd@weavermorrison.com](mailto:todd@weavermorrison.com)

**Ideal Location - ±40,840 SF Manufacturing Building on 1.36 Acres**

**NEAR PORT EVERGLADES, I-595, FTL AIRPORT**

**3300 SE 6th Avenue**

**FORT LAUDERDALE, FLORIDA 33316**



**WEAVER • MORRISON**



**COMMERCIAL REAL ESTATE**

**Todd H. Weaver, Principal**

954 205 4289

[todd@weavermorrison.com](mailto:todd@weavermorrison.com)

**Ideal Location - ±40,840 SF Manufacturing Building on 1.36 Acres**

**NEAR PORT EVERGLADES, I-595, FTL AIRPORT**

3300 SE 6th Avenue

**FORT LAUDERDALE, FLORIDA 33316**



**WEAVER • MORRISON**



COMMERCIAL REAL ESTATE

**Todd H. Weaver, Principal**

954 205 4289

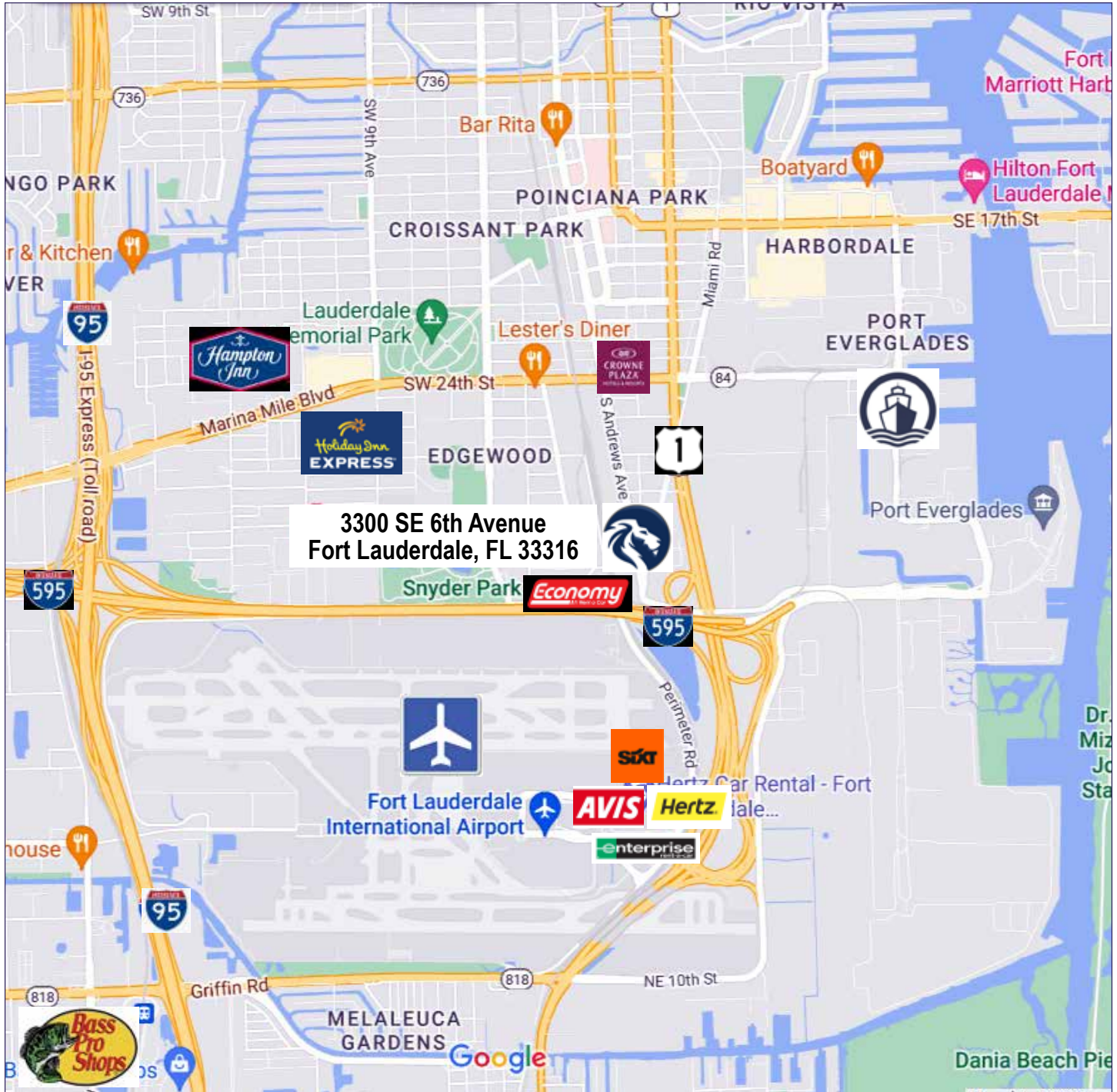
[todd@weavermorrison.com](mailto:todd@weavermorrison.com)

**Ideal Location - ±40,840 SF Manufacturing Building on 1.36 Acres**

**NEAR PORT EVERGLADES, I-595, FTL AIRPORT**

3300 SE 6th Avenue

**FORT LAUDERDALE, FLORIDA 33316**



**WEAVER • MORRISON**



COMMERCIAL REAL ESTATE

**Todd H. Weaver, Principal**

954 205 4289

todd@weavermorrison.com