

OFFICE SPACE FOR LEASE FROM ±2,833 SF - ±5,798 SF

BANK OF AMERICA BUILDING

1333 S. University Drive

PLANTATION, FLORIDA 33324



PROPERTY HIGHLIGHTS:

- **±5,798 SF Professional Office Space:**
 - Suite 202, ±2,965 SF (±5,798 SF with #203)
 - Suite 203, ±2,833 SF (±5,798 SF with #202)
- **Parking: 5.0/1000**
- **Zoned: SPI-3, City of Plantation**
- **Convenient location near bank, shopping and restaurants**
- **Close proximity to I-595 and Florida's Turnpike**

CONTACT:

Todd H. Weaver, Principal

954 205 4289

todd@weavermorrison.com

Lease Rate:

\$15.00 PSF NNN
(net of utilities and janitorial)



WEAVER · MORRISON



COMMERCIAL REAL ESTATE

WEAVER·MORRISON COMMERCIAL REAL ESTATE

2972 NW 60th Street • Fort Lauderdale, FL 33309

954 686 9300 www.weavermorrison.com

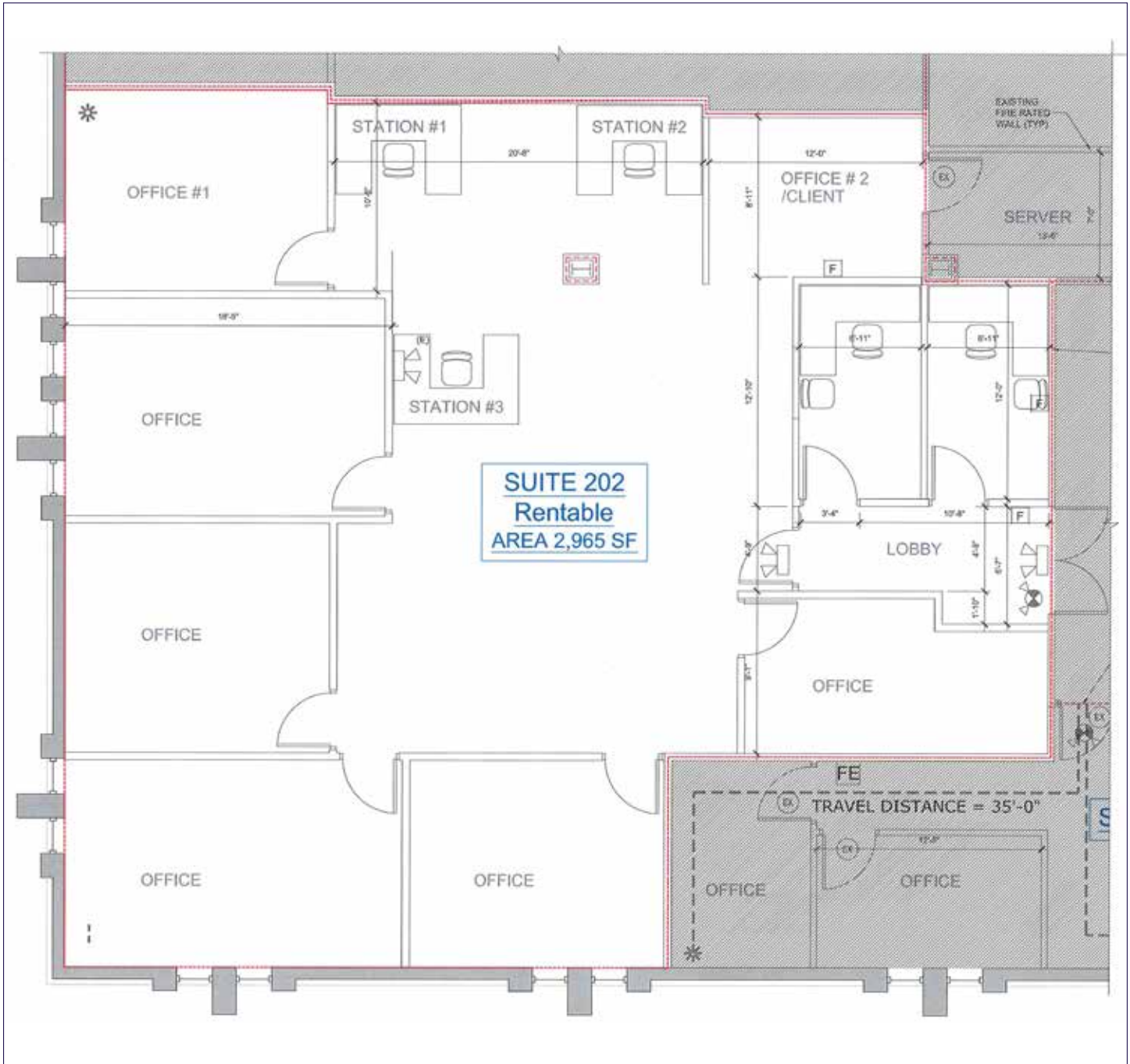
NO WARRANTY OR REPRESENTATION, EXPRESS OR IMPLIED, IS MADE AS TO THE ACCURACY OF THE INFORMATION CONTAINED HEREIN, AND THE SAME IS SUBMITTED SUBJECT TO ERRORS, OMISSIONS, CHANGE OF PRICE, RENTAL OR OTHER CONDITIONS, PRIOR SALE, LEASE OR FINANCING, OR WITHDRAWAL WITHOUT NOTICE, AND OF ANY SPECIAL LISTING CONDITIONS IMPOSED BY OUR PRINCIPALS NO WARRANTIES OR REPRESENTATIONS ARE MADE AS TO THE CONDITION OF THE PROPERTY OR ANY HAZARDS CONTAINED THEREIN ARE ANY TO BE IMPLIED.

OFFICE SPACE FOR LEASE FROM ±2,833 SF - ±5,798 SF

BANK OF AMERICA BUILDING

1333 S. University Drive

PLANTATION, FLORIDA 33324



WEAVER • MORRISON



COMMERCIAL REAL ESTATE

Todd H. Weaver, Principal

954 205 4289

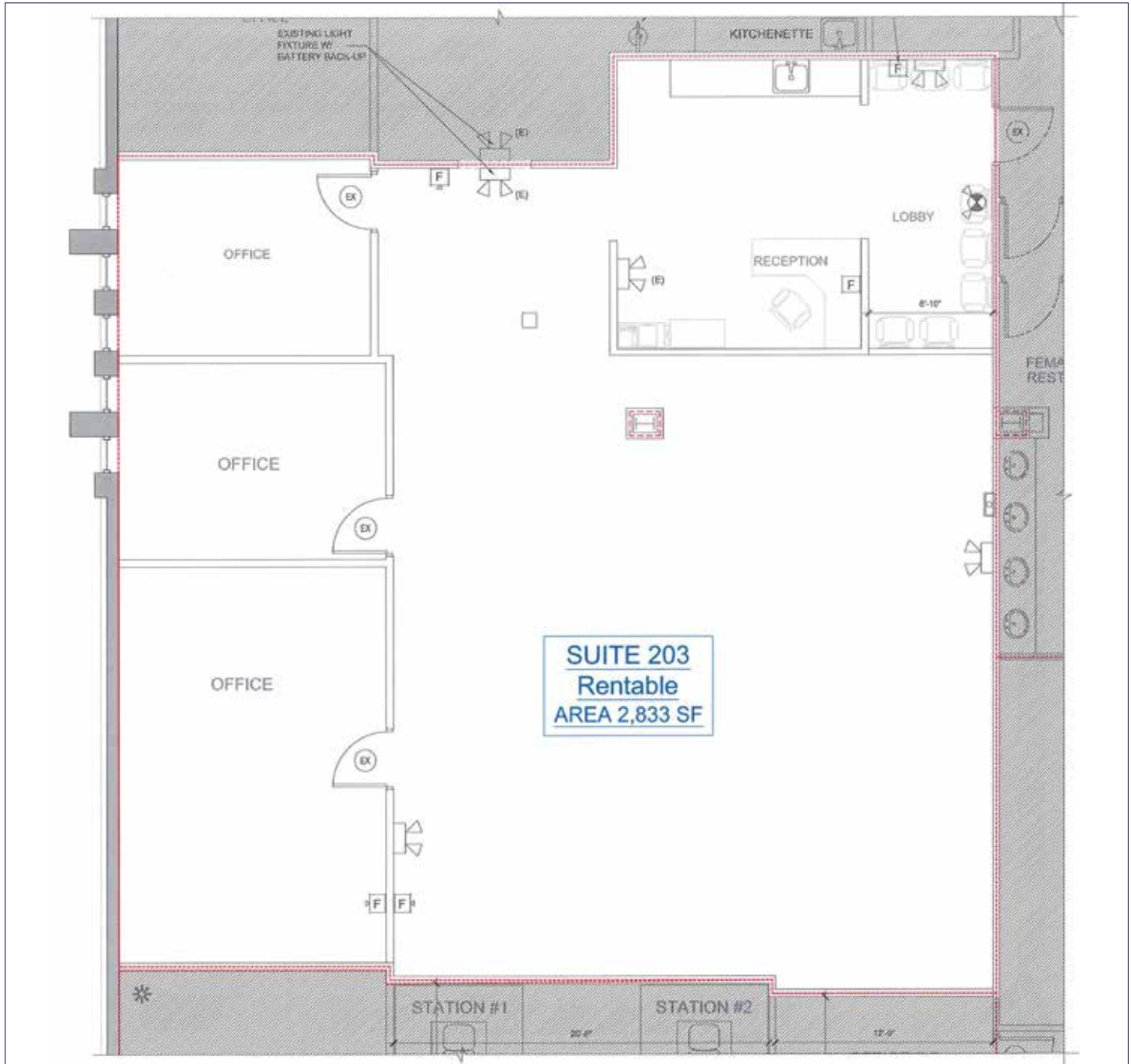
todd@weavermorrison.com

OFFICE SPACE FOR LEASE FROM ±2,833 SF - ±5,798 SF

BANK OF AMERICA BUILDING

1333 S. University Drive

PLANTATION, FLORIDA 33324



WEAVER • MORRISON



COMMERCIAL REAL ESTATE

Todd H. Weaver, Principal

954 205 4289

todd@weavermorrison.com

OFFICE SPACE FOR LEASE FROM ±2,833 SF - ±5,798 SF

BANK OF AMERICA BUILDING

1333 S. University Drive
PLANTATION, FLORIDA 33324



WEAVER · MORRISON



COMMERCIAL REAL ESTATE

Todd H. Weaver, Principal
954 205 4289
todd@weavermorrison.com