

**OFFICE SPACE FOR LEASE FROM ±2,823 SF - ±6,210 SF**

# **BANK OF AMERICA BUILDING**

1333 S. University Drive

**PLANTATION, FLORIDA 33324**



## PROPERTY HIGHLIGHTS:

- **±6,210 SF Professional Office Space:**
  - Suite 202, ±2,823 SF (±6,210 SF with #203)
  - Suite 203, ±3,387 SF (±6,210 SF with #202)
- **Parking: 5.0/1000**
- **Zoned: SPI-3, City of Plantation**
- **Convenient location near bank, shopping and restaurants**
- **Close proximity to I-595 and Florida's Turnpike**

## CONTACT:

**Todd H. Weaver, Principal**

**954 205 4289**

[todd@weavermorrison.com](mailto:todd@weavermorrison.com)

**Lease Rate:**

**\$15.00 PSF NNN**  
(net of utilities and janitorial)



**WEAVER · MORRISON**



**COMMERCIAL REAL ESTATE**

**WEAVER·MORRISON COMMERCIAL REAL ESTATE**

2972 NW 60th Street • Fort Lauderdale, FL 33309

954 686 9300 [www.weavermorrison.com](http://www.weavermorrison.com)

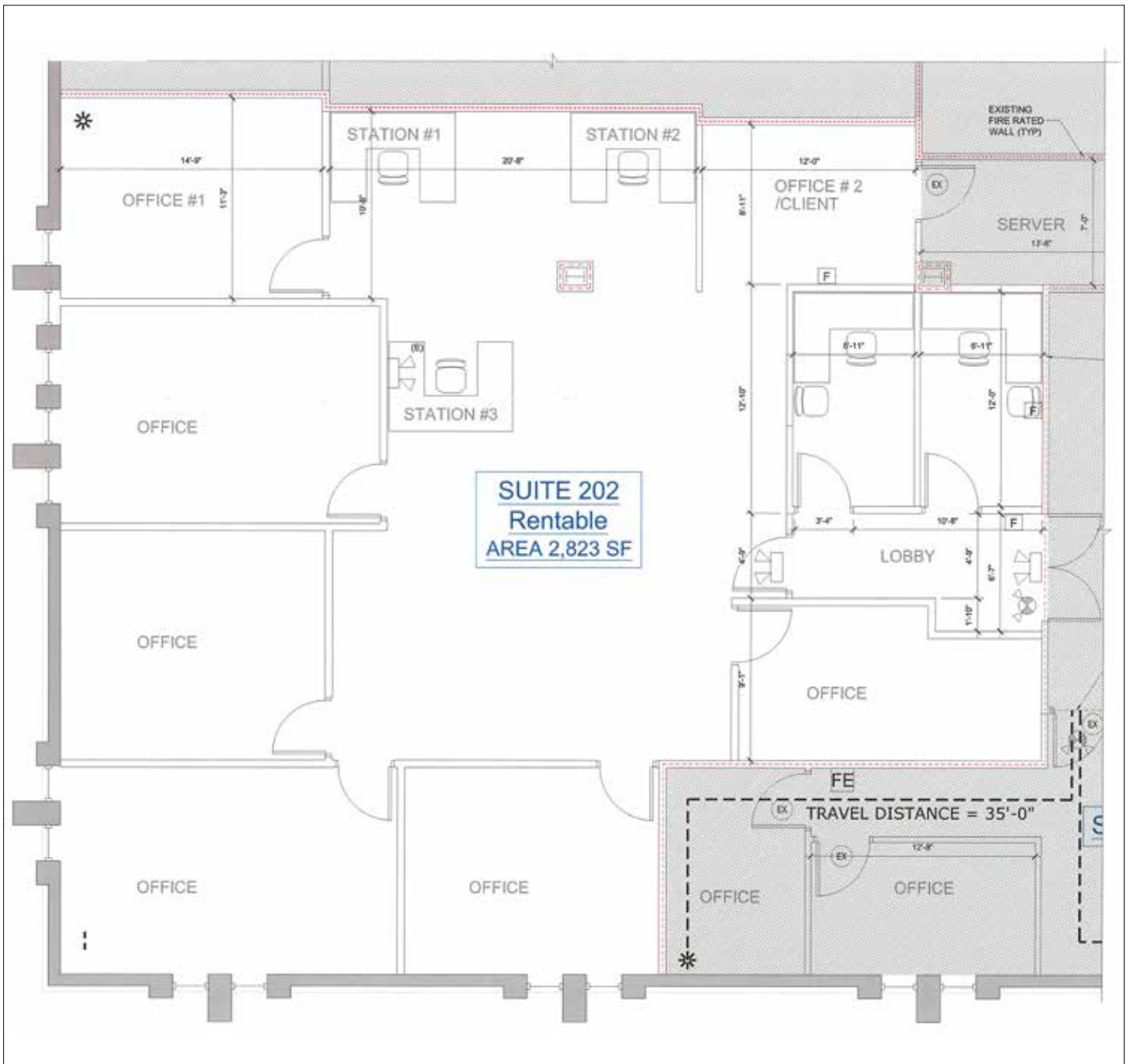
NO WARRANTY OR REPRESENTATION, EXPRESS OR IMPLIED, IS MADE AS TO THE ACCURACY OF THE INFORMATION CONTAINED HEREIN, AND THE SAME IS SUBMITTED SUBJECT TO ERRORS, OMISSIONS, CHANGE OF PRICE, RENTAL OR OTHER CONDITIONS, PRIOR SALE, LEASE OR FINANCING, OR WITHDRAWAL WITHOUT NOTICE, AND OF ANY SPECIAL LISTING CONDITIONS IMPOSED BY OUR PRINCIPALS NO WARRANTIES OR REPRESENTATIONS ARE MADE AS TO THE CONDITION OF THE PROPERTY OR ANY HAZARDS CONTAINED THEREIN ARE ANY TO BE IMPLIED.

OFFICE SPACE FOR LEASE FROM ±2,823 SF - ±6,210 SF

# BANK OF AMERICA BUILDING

1333 S. University Drive

PLANTATION, FLORIDA 33324



**WEAVER • MORRISON**



COMMERCIAL REAL ESTATE

**Todd H. Weaver, Principal**

954 205 4289

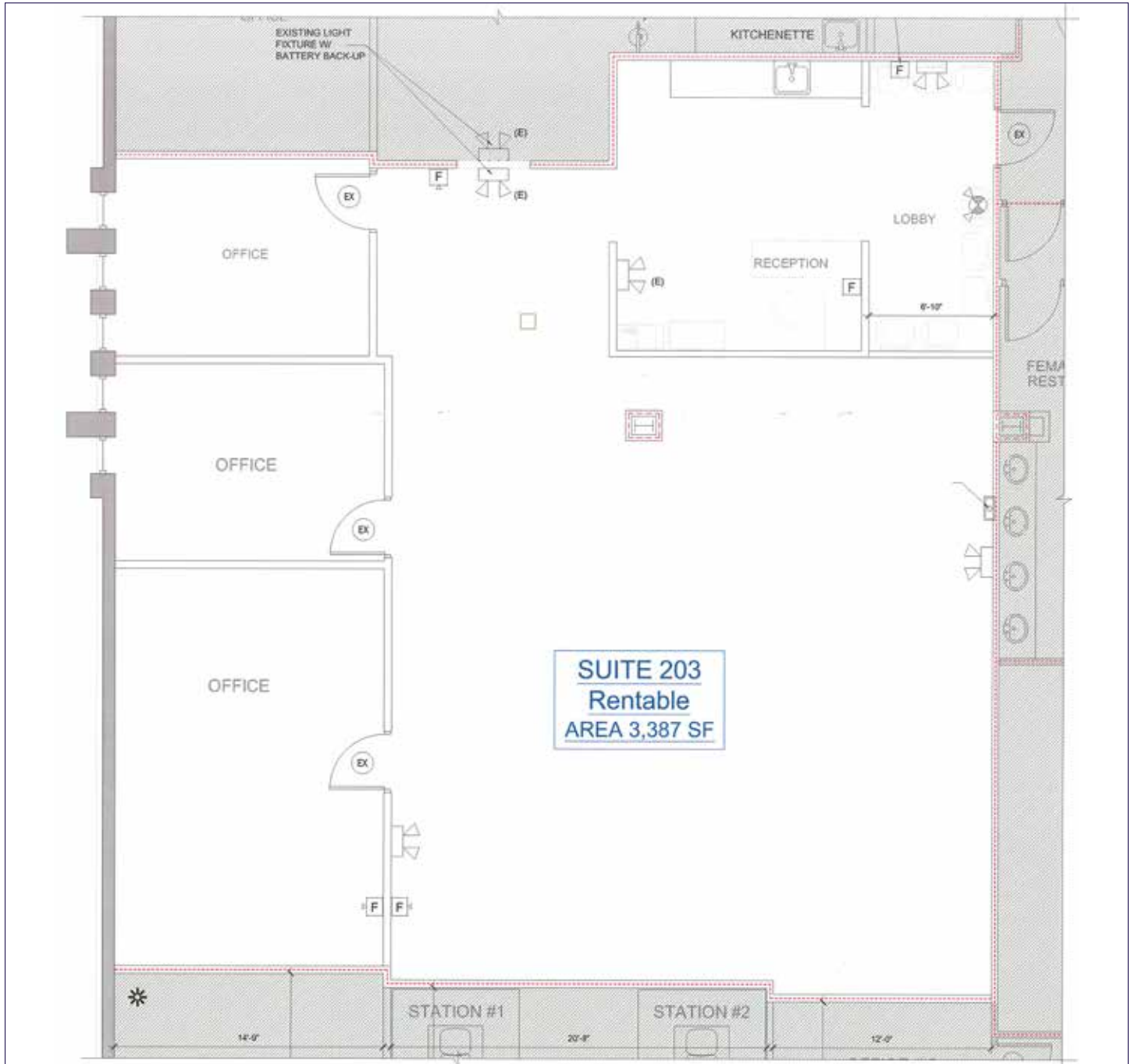
todd@weavermorrison.com

**OFFICE SPACE FOR LEASE FROM ±2,823 SF - ±6,210 SF**

# **BANK OF AMERICA BUILDING**

1333 S. University Drive

**PLANTATION, FLORIDA 33324**



**WEAVER • MORRISON**



COMMERCIAL REAL ESTATE

**Todd H. Weaver, Principal**

954 205 4289

[todd@weavermorrison.com](mailto:todd@weavermorrison.com)

OFFICE SPACE FOR LEASE FROM ±2,823 SF - ±6,210 SF

# BANK OF AMERICA BUILDING

1333 S. University Drive  
PLANTATION, FLORIDA 33324



**WEAVER · MORRISON**



COMMERCIAL REAL ESTATE

**Todd H. Weaver, Principal**  
954 205 4289  
todd@weavermorrison.com