

OFFICE SPACE FOR LEASE

CORAL SPRINGS CORPORATE PARK

11950 NW 39th Street, Suite E
CORAL SPRINGS, FLORIDA 33065



PROPERTY HIGHLIGHTS:

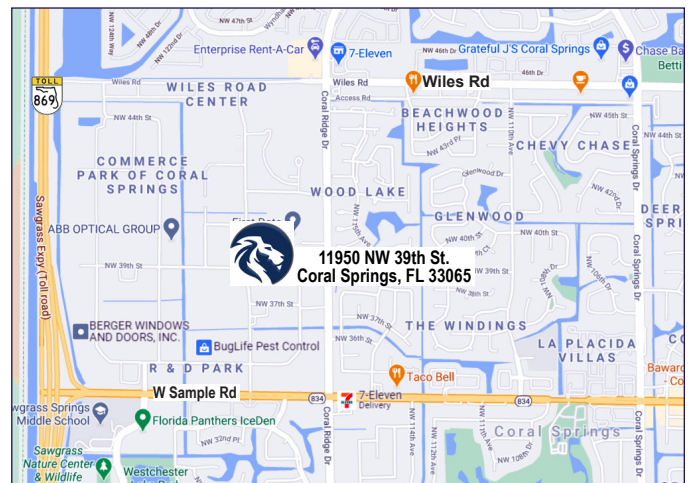
- **±2,127 SF Office space**
- **Reception area with 2 offices, 2 restrooms and work area**
- **Can be combined with ±3,739 SF Flex space**
- **100% HVAC**
- **Nice and clean - move in condition**
- **Zoned: IRD, City of Coral Springs**
- **Minutes from Sawgrass Expy. (FL SR 869)**

Lease Rate:

\$10.00 psf NNN
(includes water)

CONTACT:

Franklin B. Morrison, Principal
954 801 0830
frank@weavermorrison.com



WEAVER · MORRISON



COMMERCIAL REAL ESTATE

WEAVER·MORRISON COMMERCIAL REAL ESTATE

2972 NW 60th Street • Fort Lauderdale, FL 33309

954 686 9300 www.weavermorrison.com

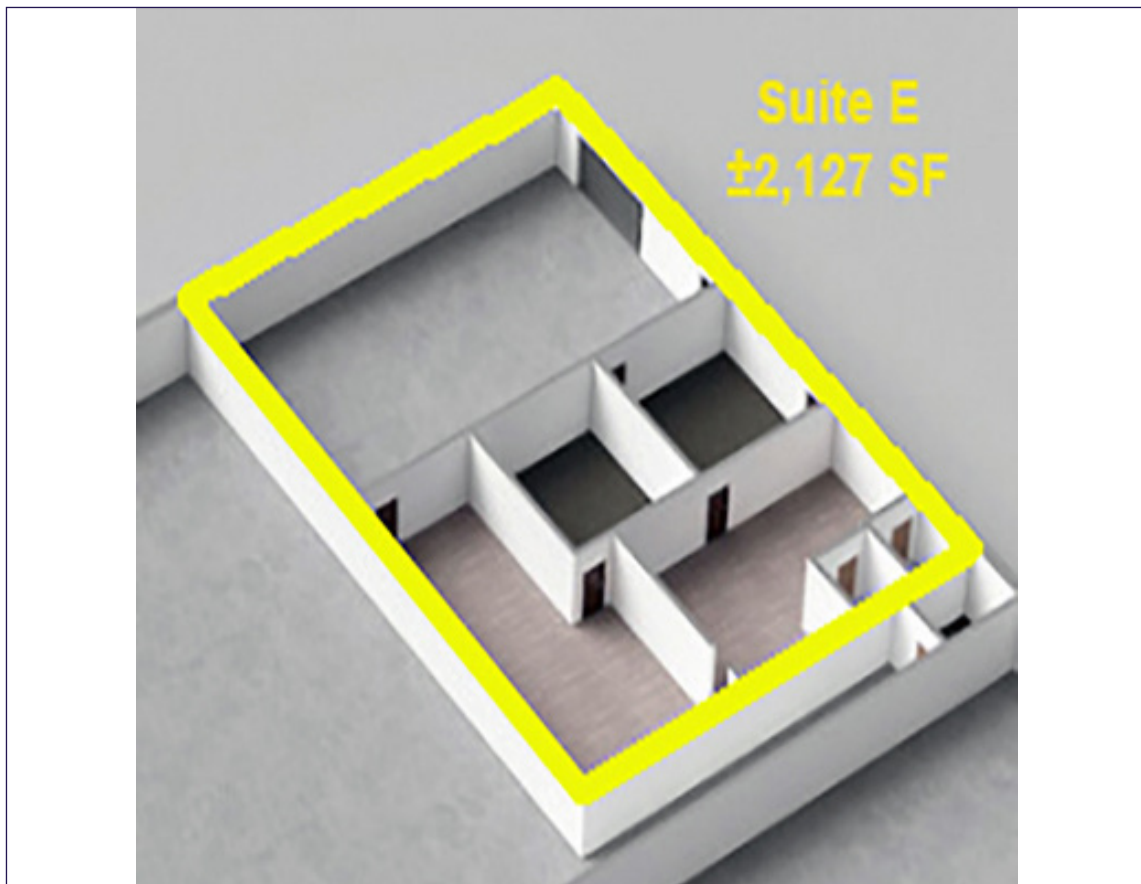
NO WARRANTY OR REPRESENTATION, EXPRESS OR IMPLIED, IS MADE AS TO THE ACCURACY OF THE INFORMATION CONTAINED HEREIN, AND THE SAME IS SUBMITTED SUBJECT TO ERRORS, OMISSIONS, CHANGE OF PRICE, RENTAL OR OTHER CONDITIONS, PRIOR SALE, LEASE OR FINANCING, OR WITHDRAWAL WITHOUT NOTICE, AND OF ANY SPECIAL LISTING CONDITIONS IMPOSED BY OUR PRINCIPALS NO WARRANTIES OR REPRESENTATIONS ARE MADE AS TO THE CONDITION OF THE PROPERTY OR ANY HAZARDS CONTAINED THEREIN ARE ANY TO BE IMPLIED.

OFFICE SPACE FOR LEASE

CORAL SPRINGS CORPORATE PARK

11950 NW 39th Street, Suite E

CORAL SPRINGS, FLORIDA 33065



WEAVER • MORRISON



COMMERCIAL REAL ESTATE

Franklin B. Morrison, Principal

954 801 0830

frank@weavermorrison.com